



Specifications

Inch Size

ORDER NO.	Table Slot	Stud Size	G.W. kg	Meas. CFT	CODE NO.
CK-103A	7/16"	3/8"-16w	6.5	(C) 0.8	1003-009
CK-103B	1/2"		6.5		1003-010
CK-104A	9/16"	1/2"-12w 1/2"-13UNC	9.7	(C) 1.0	1003-011
CK-104B	5/8"		10.4		1003-012
CK-105A	11/16"	5/8"-11w	12.5	(C) 1.5	1003-013
CK-105B	3/4"		11.8		1003-014
CK-206	7/8"	3/4"-10w	26.5	2.0	1003-015

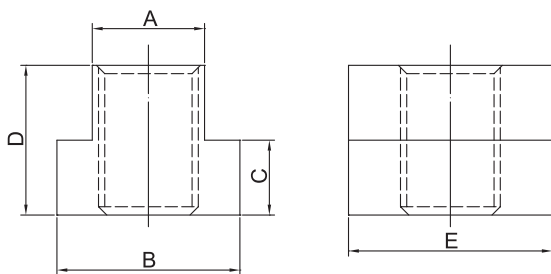
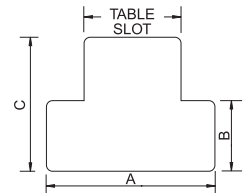
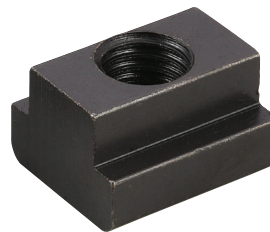
Metric Size

ORDER NO.	Table Slot	Stud Size	G.W. kg	Meas. CFT	CODE NO.
CK-08	10	M8-1.25P	7.4	(C) 0.8	1003-001
CK-10	12	M10-1.5P	7.6		1003-002
CK-12A	14	M12-1.75P	9.4	(C) 1.0	1003-003
CK-12B	15.7		9.5		1003-004
CK-14	16	M14-2.0P	11.1	(C) 1.5	1003-005
CK-16	18	M16-2.0P	12.6		1003-006
CK-18	20	M18-2.5P	25.3	(C) 1.6	1003-007
CK-20	22	M20-2.5P	27	(C) 2.0	1003-008

- Heat treated steel black oxide finish.
- Block size 1" (25mm). Set in plastic rack consists of:
24 pcs Studs (4 ea, 3/4/5/6/7/8 inches or 75/100/125/150/175/200mm.)
6 pcs T-Nuts
4 pcs Coupling Nuts
6 pcs Flange Nuts
6 pcs Step Clamps
6 pcs Step Blocks
- CK-18, CK-20, CK-206, Pack in wooden or Plastic Tray.
- The parts of every specification all can be purchased individually.

INDIVIDUALLY PARTS T-SLOT NUT

HRC 34°



Inch Size

ORDER NO.	Table Slot	Thread Size	A	B	C	Length	WEIGHT (kg)	CODE NO.
3413I	7/16	3/8-16	11/16	7/32	1/2	7/8	0.023	1003-180
3423I	1/2		7/8	9/32	1/2	7/8	0.032	1003-181
3433I	9/16		7/8	11/32	5/8	1-1/8	0.048	1003-182
3414I	9/16	1/2-12 1/2-13	7/8	11/32	5/8	1-1/8	0.048	1003-183
3424I	5/8		1	11/32	5/8	1-1/8	0.06	1003-184
3434I	11/16		1-1/8	7/16	3/4	1-1/4	0.087	1003-185
3415I	11/16	5/8-11	1-1/8	7/16	3/4	1-1/4	0.087	1003-186
3425I	3/4		1-1/4	15/32	3/4	1-1/4	0.102	1003-187
3435I	13/16		1-1/4	9/16	1	1-1/2	0.142	1003-188
3416I	13/16	3/4-10	1-1/4	9/16	1	1-1/2	0.142	1003-189
3426I	7/8		1-1/2	9/16	1	1-1/2	0.175	1003-190
3436I	1		1-5/8	5/8	1	1-3/4	0.2	1003-191
3446I	1-1/16		1-5/8	11/16	1-1/2	2	0.23	1003-192
3417I	1	7/8-9	1-5/8	5/8	1	1-1/2	0.21	1003-193
3418I	1-1/16	1-8	1-5/8	11/16	1-1/2	2	0.25	1003-194

Metric Size

ORDER NO.	Table Slot	Thread Size	A±0.3	B	C	D	E	CODE NO.
3412M	10	M8	9	16	6	12	22	1003-020
3423M	12	M10	11.5	18	7	14	22	1003-021
3414M	14	M12	13.5	22	8	16	28	1003-022
A3424M	16	M12	15.3	25	8	16	28	1003-023
B3424M	16	M14	15.3	25	8	16	28	1003-024
3415M	18	M16	17	28	11	20	32	1003-025
3416M	20	M18	19.5	32	12	24	38	1003-026
3417M	22	M20	21.5	35	14	28	38	1003-027
3418M	28	M24	26.5	44	18	36	38	1003-028