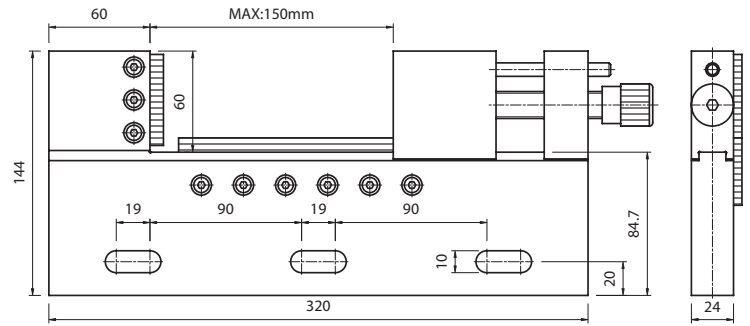
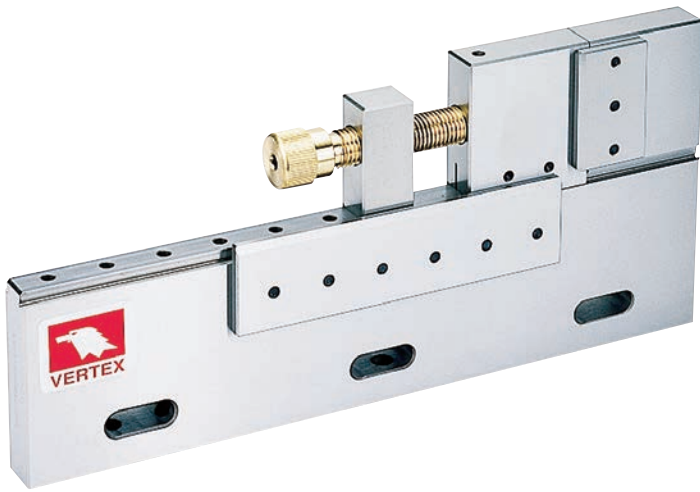


EDM Tool Marker Vise (STAINLESS) VERTEX®



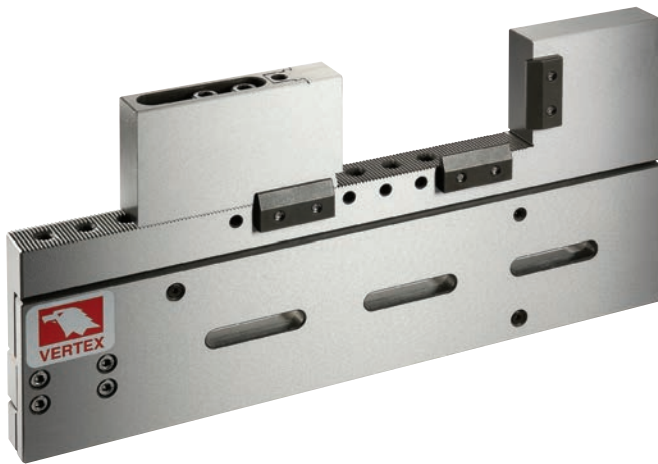
● Do not over lock.

PARALLELISM	±0.002 mm / 100 mm	
SQUARENESS	±0.002 mm / 100 mm	
ORDER NO.	WEIGHT (kgs)	CODE NO.
VSTV-150W	6.75	2008-060

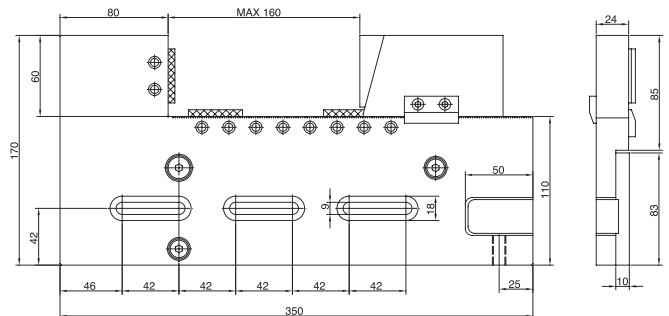
MAX.OPENING	150 mm
THICKNESS	24 mm
JAW DEEP	60 mm
N.W	6.75 kgs
MATERIAL	SUS420
HARDNESS	HRC 54°±2°

EDM TOOL MARKER VISE

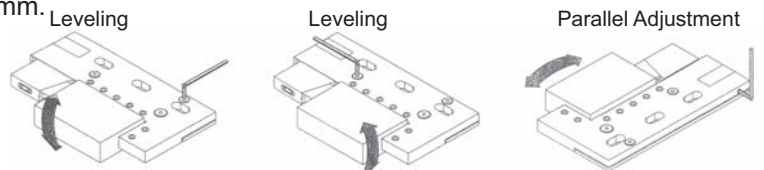
EDM Tool Maker Vise (STAINLESS)



● Over lock may break vise.



- Parallelism: 0.003 / 100 mm, Squareness: 0.005 / 100 mm.
- Hardness: up to HRC 45°~55°.
- The vise can be adjusted up and down, left and right, forth and back to set parallelism.
- High water pressure resistance.



PARALLELISM	±0.003 mm / 100 mm	
SQUARENESS	±0.005 mm / 100 mm	
ORDER NO.	WEIGHT (kgs)	CODE NO.
VSTV-320W	8	2008-090

MAX.OPENING	160 mm
THICKNESS	24 mm
JAW DEEP	60 mm
N.W	8 kgs
MATERIAL	STAVAX
HARDNESS	HRC 52°±2°