

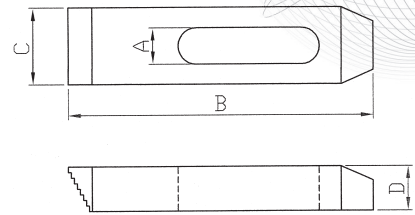
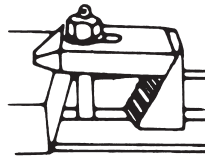
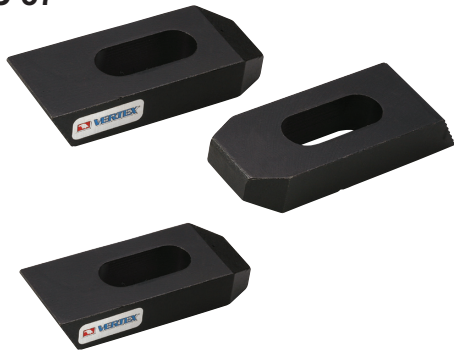


Step Clamp

HRC 37°



VERTEX®



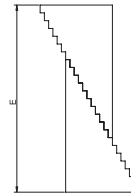
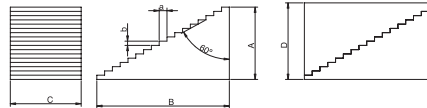
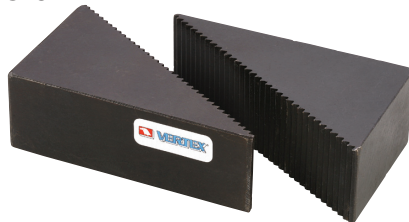
Metric Size

ORDER NO.	Bolt Size	A slot	B Length	C Width	D Thickness	Weight (kg)	CODE NO.
6113	M8 or M10	11	64	25	12	0.25	1003-030
6123	M8 or M10		100	25	16	0.49	1003-031
6133	M8 or M10		150	28	19	0.99	1003-032
6214	M12	14	64	28	12	0.25	1003-033
6224	M12		100	32	19	0.35	1003-034
6234	M12		150	32	22	0.60	1003-035
6215	M16	18	64	32	22	0.31	1003-036
6225	M16		100	38	19	0.85	1003-037
6235	M16		150	38	22	1.47	1003-038
6316	M20 or M18	20	100	38	19	0.75	1003-039
6326	M20 or M18		150	38	25	1.43	1003-040
6336	M20 or M18		200	44	28	2.82	1003-041
6417	M24	26	150	50	32	1.9	1003-042
6427	M24		200	50	35	2.75	1003-043
6437	M24		250	50	38	3.8	1003-044



Step Block

HRC 37°



ORDER NO.	A	B	C	D	E	a	b	CODE NO.
5114	19	30	25	21	45	3.1	1.8	1003-170
5124	30	47	25	32	70	3.1	1.8	1003-171
5134	59	97	25	61	147	3.1	1.8	1003-172
5114B	19	30	32	21	45	3.1	1.8	1003-170B
5124B	30	47	32	32	70	3.1	1.8	1003-171B
5134B	59	97	32	61	147	3.1	1.8	1003-172B
5215	39	59	38	41	87	3.1	1.8	1003-173
5225	61	97	38	63	147	3.1	1.8	1003-174
5235	86	140	38	88	210	3.1	1.8	1003-175



C-Clamp Cast Steel

NEW



ORDER NO.	MAX. OPEN	THROAT DEPTH	LxW	WEIGHT (kgs)	CODE NO.
VCL-2C	1-7/8"	1-7/8"	120x84mm	0.22	1003-210
VCL-3C	2-3/4"	2"	163x91mm	0.38	1003-211
VCL-4C	3-7/8"	2-1/2"	195x102mm	0.59	1003-212
VCL-6C	6"	3-1/2"	270x127mm	1.18	1003-213
VCL-8C	7-3/8"	4-1/2"	345x161mm	1.75	1003-214

mm