

Magnetic Tapper



NEW



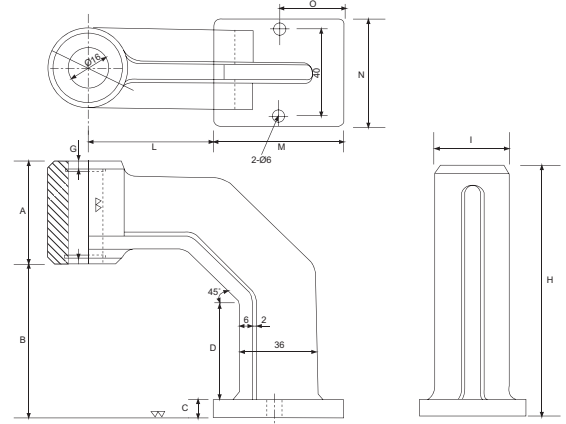
Cost higher



Example.



- Suit for large workpiece
- TAP thread capacity M3-M12
- MAX. stroke 60 mm
- Magnetic force 80 kgf
- Horizontal / Vertical
- Portable
- Great for machine case & thin plate tapping job.
- TAP & Iron piece not included.



Unit : mm

ORDER NO.	A	B	C	D	H	I	L	M	N	O	WEIGHT (kgs)	CODE NO.
VTM-13	50	72	10	45	122	36	60	60	50	30	3.10	2015-731

Magnetic Clamp



Welder's Magnetic Ground Clamp

Heavy-duty steel housing holds a powerful magnet for fast, yet safe ground.

Ground wire will rotate 360° for easy access.

Equipped with a spring-loaded brass electrode, the magnetic ground clamps attach securely direct to work surface.

ORDER NO.	MASS	CUFT	L x W x H	WEIGHT (kg)	CODE NO.
VCC-30	10kgs	0.07'	70 x 52 m/m	0.48	2033-220
VCC-31	5.6kgs	0.05'	49 x 40 m/m	0.12	2033-221

Magnetic Quick Clamp



XL



L



M

ORDER NO.	SIZE	PACKING	MASS	CUFT	DIMENSION			WEIGHT (kg)	CODE NO.
					L	W	H		
VCC-33	M	Sliding Card	26kgs	0.03'	120	82	14	0.32	2033-223
VCC-34	L	Sliding Card	25kgs	0.03'	158	102	19	0.68	2033-224
VCC-35	XL	Sliding Card	10kgs	0.05'	202	128	21	1.13	2033-225